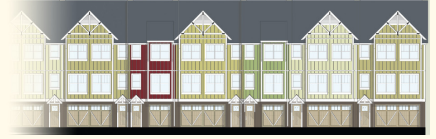


# LA FRANCE STREET

## TOWNHOMES



### **Standard Features:**

---

#### **Exterior Details**

- Brick and Hardi-plank exterior with custom colors
- Asphalt architectural shingles with a 25-year manufacturer's warranty
- Deluxe exterior lighting fixtures
- Custom Doors with Divided Lights
- Raised panel metal garage door with automatic opener
- Professionally landscaped community (w/sod, shrubs, & trees)
- Hose Bib
- Two Decks and one Patio – Terrace off of Master, large deck off of kitchen, patio in backyard
- Individual yards for each unit

#### **Interior Details**

- 1 or 2 Car front entry garage with flex space and full bath at terrace level
- 10' ceiling height on main floor
- 9' ceiling height on Secondary Floor
- 6 panel smooth interior doors with brushed chrome hardware
- 2-piece 4 inch Crown Molding
- 8" Baseboards
- Oak stair railing with wrought iron spindles
- Engineered floor joist system
- Smoke Detectors on each floor
- Wired for phone, cable, & security – home audio/networking available as an upgrade
- Wired for Ceiling fans in all bedrooms and living room
- Designer lighting package with ceiling lights in all bedrooms except master
- Direct vent gas fireplace in living room
- Custom Duron Pro-coated Supreme paint colors and White solitude trim

# LA FRANCE STREET TOWNHOMES



## Standard Features:

---

### **Kitchen**

- Granite countertop
- Recessed lighting
- Breakfast bar
- Hardwood floors
- Designer white cabinets 42”
  - \* Standard overlay recessed panel doors
  - \* Hidden hinges
- Standard Appliance Package Including
  - \* Dishwasher
  - \* Oven/Range
  - \* Microwave
  - \* Garbage Disposal
- Stainless Steel Sink
- Icemaker water line connection

### **Master Bedroom Suite & Bath**

- Vaulted ceiling in master bedroom
- Granite countertop with under mount, white porcelain sinks
- Tile floor and tub surround
- Soaking tub with Dual Shower heads
- Brushed Chrome fixtures
- Elongated toilet
- Designer white cabinets (match kitchen cabinets) with granite countertop
- Large walk-in closet with ventilated shelving

## Standard Features:

# LA FRANCE STREET

## TOWNHOMES



---

### Secondary Baths

- Single vanity cabinet in powder room
- Tile floor & tub/shower combo
- Matching white kitchen cabinets
- Granite countertop

### Energy Efficient and Savings

- R-13 insulation in exterior walls
- R-19 insulation in garage
- R-30 blown insulation in attic
- High performance 40-gallon gas water heater
- High efficiency gas furnace
- Insulated exterior doors & windows
- Each unit is housewrapped